

Stanart at 201 Caroline, Suite 460, Houston, Texas 77002. Defendant Don Sumners, Harris County Tax Assessor Collector may be served by delivering a copy of the summons and of the complaint to Don Sumners at 1001 Preston, Houston, Texas 77002. At the time of filing this First Amended Complaint, Defendants Stan Stanart and Don Sumners have been served.

II. Jurisdiction and Venue

3. The Court has federal-question jurisdiction over this action, pursuant to 28 U.S.C. § 1331, because Plaintiff's claims arise under the Constitution and laws of the United States, including the Fourteenth Amendment to the United States Constitution, Section 1983 of the Civil Rights Act, 42 U.S.C. § 1983, 42 U.S.C. § 1973c, and 28 U.S.C. § 1343.

4. Venue is proper in this district under 28 U.S.C. §§ 1391(b)(1) and 1391(b)(2).

III. Introduction

5. This dispute arises from Defendants' use of incorrect election boundaries when conducting primary elections for HCDE trustee positions 4 and 6. The boundaries used, which were adopted in 2001 ("the 2001 boundaries"), predate the 2010 census and have been declared unconstitutional by the Honorable Judge Vanessa Gilmore in *Rodriguez v. Harris Cnty.*, No. 4:11-CV-02907 (S.D. Tex. 2011). Judge Gilmore found that the 2001 boundaries violate the Fourteenth Amendment's "one-person, one-vote" requirement and ordered the use of interim boundaries in connection with the 2012 primary elections for county commissioners' seats.

6. As explained below, the precinct boundaries for county commissioner and HCDE trustee positions are the same. Yet, while the Defendants used the court-ordered interim boundaries when holding primary elections for county commissioner seats, it is undisputed that the Defendants failed to use the interim boundaries when conducting HCDE's primary election

applicable chapter as that chapter existed on that date and under state law generally applicable to school districts that does not conflict with that chapter.”).

and instead used the 2001 boundaries that Judge Gilmore previously declared unconstitutional. For the reasons explained below, HCDE contends that the use of the 2001 boundaries for HCDE's primary election was unconstitutional; requests that the primary election and related run-off election be declared void; and requests that the Court order a special election to remedy the violation.

IV. Background and Facts

7. Because Harris County has a population in excess of 350,000, the Board of Trustees of HCDE consists of seven members, three of whom are elected from the county at large and one from each of the four commissioner precincts. *See* TEX. EDUC. CODE § 17.02(b). HCDE trustees serve six-year terms. *Id.* HCDE trustees are elected at the general election for state and county officers, and the office of county school trustee is considered a county office for purposes of nomination and election for the commencement of the term of office. *See* TEX. EDUC. CODE § 17.031.

8. Defendant Harris County is responsible for conducting elections for HCDE trustees because the office of county school trustee is a county office,. As part of that duty, Defendant Harris County is responsible for notifying the Harris County Tax Assessor Collector of new county commissioner precinct boundary lines as required by Texas Election Code § 42.0615, conducting all other aspects of the HCDE trustee elections, and seeking preclearance under Section 5 of the Voting Rights Act of 1965 when required.

9. The following three HCDE Trustee positions were up for election in 2012, with primary elections held in all three positions on May 29, 2012:

- a. Position 3, which is at-large, in which Democrats David Rosen and Diane Trautman and Republicans Richard Johnson and Michael Wolfe ran;

- b. Position 4, which is precinct-based and the boundaries of which corresponds to Harris County commissioner precinct 3, in which Democrat Sylvia Mintz and Republicans Ray Garcia and Kay Smith ran; and
- c. Position 6, which is precinct-based and the boundaries of which corresponds to Harris County commissioner precinct 1, in which Democrats Reagan Flowers, Jarvis Johnson, and Erica Lee and Republican JuLurette Bartlett-Pack ran.

10. Due to the 2010 census, Harris County proposed a redistricting plan for the Harris County commissioner precincts for the 2012 election. Harris County's revised commissioner precincts were challenged in the U.S. District Court for the Southern District of Texas. The plaintiffs alleged violations of the Equal Protection Clause, Section 2 of the Voting Rights Act, and Section 5 of the Voting Rights Act. *See Exhibit A, Rodriguez v. Harris Cnty.*, No. 4:11-CV-02907 (S.D. Tex. 2011). Judge Gilmore ordered that a Court-drawn interim plan detailing new commissioner precinct boundaries be used for the 2012 election, as she found that the use of the existing commissioner precinct boundaries drawn in 2001 to facilitate the 2012 election was unconstitutional. *Exhibit A, Rodriguez v. Harris Cnty.*, No. 4:11-CV-02907 (S.D. Tex. Nov. 19, 2011) (order directing county to adopt interim redistricting plan); *Exhibit B, Rodriguez v. Harris Cnty.*, No. 4:11-CV-02907 (S.D. Tex. Nov. 23, 2011) (order substituting interim redistricting plan).

11. The court-ordered commissioner precinct boundaries were used for the 2012 commissioner elections. However, despite being aware of the new commissioner precinct boundaries, the Harris County Tax Assessor Collector failed to update the boundaries for the HCDE trustee precinct-based elections (i.e., HCDE trustee positions 4 and 6). *See Exhibit C,*

Letter from Don Sumners post-marked July 16, 2012. Rather, Defendants used the previously declared unconstitutional 2001 commissioner precinct boundaries for the 2012 HCDE trustee primary elections for positions 4 and 6. *Id.* There is no dispute that the incorrect boundary lines were used for the HCDE trustee elections for positions 4 and 6.

12. In the position 4 trustee election, Republican Kay Smith defeated Ray Garcia. Democratic candidate Sylvia Mintz was unopposed. In the position 6 trustee election, Republican JuLette Bartlett-Pack was unopposed and a run-off is scheduled to be held between Democrats Jarvis Johnson and Erica Lee on July 31, 2012. Mail-in ballots for the run-off election have already been mailed, using the unconstitutional 2001 commissioner precinct boundary lines. On information and belief, County Clerk Stan Stanart mailed a second round of mail-in ballots using the court-ordered interim commissioner precinct boundary lines. Additionally, Harris County will use the court-ordered interim commissioner precinct boundaries for early voting and in-person voting on July 31, 2012 for the run-off election. *See Exhibit C, Letter from Don Sumners post-marked July 16, 2012* (Don Sumners affirmatively stating, “The correct boundary lines will be used for the Democratic Primary Run-off Election.”).

13. With respect to HCDE trustee position 4, 34,154 registered voters were allowed to vote who should not have been given the opportunity to vote in that trustee race. *See Exhibit D, Official Cumulative Report for May 29, 2012 primary elections* (comparing 524,138 registered voters for the HCDE trustee position 4 position to 489,984 registered voters for commissioner precinct 3). Consequently, 15.35% of the registered voters for the HCDE trustee position 4 election should not have been afforded the opportunity to vote in the primary election. With respect to HCDE trustee position 6, 27,352 registered voters were denied the opportunity to vote in the correct trustee race. *See Exhibit D, Official Cumulative Report for May 29, 2012 primary*

elections (comparing 462,549 registered voters for the HCDE trustee position 6 position to 489,901 registered voters for commissioner precinct 1). Therefore, 17.91% of registered voters in HCDE trustee position 6/precinct 1 were denied the opportunity to vote in the HCDE trustee position 6 primary election.

V. Declaratory Judgment

14. HCDE respectfully requests that the Court declare the May 29, 2012 primary election for HCDE trustee positions 4 and 6 and the July 31, 2012 Democratic run-off election for HCDE trustee position 6 based on the May 29, 2012 primary election void. HCDE further requests that the Court order a special election to be held in conjunction with the general election in November 2012 for HCDE trustee positions 4 and 6, with candidates from all parties running against one another, using the commissioner precinct boundaries ordered by Honorable Judge Vanessa Gilmore on November 19 and 23, 2011.

A. May 29, 2012 primary election was unconstitutional under the Fourteenth Amendment to the U.S. Constitution and the “one person, one vote” principle of *Reynolds v. Sims* and its progeny.

15. The Fourteenth Amendment to the U.S. Constitution requires that, for purposes of elections, governmental districts must be apportioned to have equal populations to ensure that all votes count equally, giving rise to the well-established principle of “one person, one vote.” When Harris County’s proposed redistricting plan was challenged, U.S. District Court Judge Vanessa Gilmore found that using the existing commissioner precinct boundaries drawn in 2001 to facilitate the 2012 election violated this principle and was constitutionally impermissible. *Exhibit A, Rodriguez v. Harris Cnty.*, No. 4:11-CV-02907 (S.D. Tex. Nov. 19, 2011) (order directing county to adopt interim redistricting plan). Judge Gilmore found that such use was unconstitutional “because the boundaries would result in a total population deviation [across all

four commissioner precincts] of more than 25%, well outside of constitutionally permissible limits.” *Exhibit A, Rodriguez v. Harris Cnty.*, No. 4:11-CV-02907 (S.D. Tex. Nov. 19, 2011).

16. After finding the 2001 commissioner precinct boundaries unconstitutional for the 2012 election, Judge Gilmore ordered that a Court-drawn interim plan detailing new commissioner precinct boundaries be used for the 2012 election. *Exhibit A, Rodriguez v. Harris Cnty.*, No. 4:11-CV-02907 (S.D. Tex. Nov. 19, 2011) (order directing county to adopt interim redistricting plan); *Exhibit B, Rodriguez v. Harris Cnty.*, No. 4:11-CV-02907 (S.D. Tex. Nov. 23, 2011) (order substituting interim redistricting plan).

17. Harris County, however, failed to update the boundaries for the HCDE trustee precinct-based elections and used the unconstitutional 2001 commissioner precinct boundaries for the 2012 HCDE trustee primary elections. By using the 2001 unconstitutional commissioner precinct boundaries for the HCDE trustee elections, Harris County allowed some voters’ votes to be over-weighted and some to be diluted. *See supra* ¶ 13 (detailing the disparities between the number of registered voters based on the 2001 commissioner precinct boundaries and the number of registered voters based on the court-ordered commissioner precinct boundaries for the 2012 election).

18. Moreover, because Harris County, acting under color of state law, failed to hold the 2012 HCDE trustee primary elections for positions 4 and 6 within constitutionally permissible boundaries, thereby depriving voters of rights secured to them by the U.S. Constitution, Harris County has also violated section 1983 of the Civil Rights Act. 42 U.S.C. § 1983.

B. A special election is the appropriate remedy.

19. Without the Court’s intervention, the results of the general election will be the

product of an unconstitutional primary election. Thus, it is imperative that the Court take immediate corrective action to remedy the continuing constitutional violation. The most appropriate means of rectifying Harris County's failures is for the Court to invalidate the May 29, 2012 primary election (and the resulting July 31, 2012 run-off election) and order a special election.

20. If a substantial number of voters are affected by the constitutional violation, a court should invalidate the unconstitutional election and order a special election. As a result of Harris County's failures, thousands of voters were denied the right to vote in the correct precinct in HCDE's trustee primary and thousands of voters who were not qualified to vote in a given precinct were given the opportunity to vote. In HCDE trustee position 6, 27,352 registered voters were denied the opportunity to vote in the correct trustee race. *See Exhibit D, Official Cumulative Report for May 29, 2012 primary elections* (comparing 462,549 registered voters for the HCDE trustee position 6 position to 489,901 registered voters for commissioner precinct 1). In HCDE trustee position 4, 34,154 registered voters were allowed to vote who should not have been given the opportunity to vote in that trustee race. *See Exhibit D, Official Cumulative Report for May 29, 2012 primary elections* (comparing 524,138 registered voters for the HCDE trustee position 4 position to 489,984 registered voters for commissioner precinct 3).

21. The length of an HCDE trustee's term also favors invalidation of the May 29, 2012 primary election and the ordering of a special election. Section 17.02(b) of the Texas Education Code provides that HCDE trustees shall serve six-year terms. TEX. EDUC. CODE § 17.02(b). Because HCDE trustees hold office for six years, if the Court does not invalidate the primary election and order a special election, the integrity of HCDE's Board of Trustees will be tainted by this constitutional violation for years to come.

22. Finally, the proximity of the general election and feasibility of the proposed remedy weigh in favor of the invalidation of the primary election and ordering of a special election. The Court has time to remedy the constitutional violation and order the special election to be held in conjunction with the November 6, 2012 general election in accordance with the deadlines imposed by the Texas Election Code. Further, the special election is unlikely to reduce voter turnout given the “historically high” voter turnout for presidential elections.

VI. Injunctive Relief

23. In addition to declaratory relief, due to the exigent circumstances associated with holding a special election on the November general election date and the deadlines imposed by the Texas Election Code, HCDE respectfully requests that the Court enjoin Harris County from proceeding with the general election of HCDE trustees based on the unconstitutional primary and run-off and order Harris County to hold a special election for HCDE trustee positions 4 and 6. If the general election is allowed to proceed in November based on the results of the unconstitutional primary election and/or the improper run-off election, the general election would itself be unconstitutional and improper. Given the proximity of the general election and its associated deadlines, time is of the essence in resolving this matter. Therefore, HCDE requests an immediate scheduling conference for the purpose of scheduling a preliminary hearing and any necessary subsequent hearings.

VII. Prayer

24. HCDE requests an immediate scheduling conference for the purpose of scheduling a preliminary hearing and any necessary subsequent hearings. HCDE further respectfully requests that the Court:

- a. enjoin Harris County from proceeding with the general election of HCDE

trustees based on the unconstitutional primary and run-off and order Harris County to hold a special election for HCDE trustee positions 4 and 6;

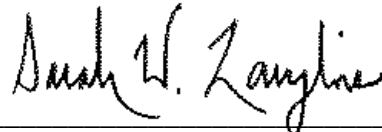
- b. declare the May 29, 2012 primary election for HCDE Trustee Positions 4 and 6 and the July 31, 2012 Democratic run-off election for HCDE Trustee Position 6 based on the May 29, 2012 primary election void;
- c. order a special election to be held in conjunction with the general election in November 2012 for HCDE Trustee Positions 4 and 6, with candidates from all parties running against one another, using the commissioner precinct boundaries ordered by Judge Vanessa Gilmore on November 19 and 23, 2011;
- d. order Harris County to seek preclearance under Section 5 of the Voting Rights Act of 1965 regarding use of the court-ordered interim commissioner precinct boundary lines and the voting procedures set forth in this Court's Order, if necessary;
- e. order that a schedule be used for the special election addressing the following deadlines:
 - deadline for open filing for HCDE Trustee Positions 4 and 6 candidates, including write-in candidates, to declare candidacy and for independent candidates to file petitions;
 - deadline for the Harris County Clerk to determine ballot position for candidates for the November 2012 special election;
 - November 6, 2012, the date of the general election and the special election; and
 - deadline for the Harris County Commissioner's Court to canvass the

results of the special election.

HCDE also respectfully requests that the Court order judgment against Harris County for reasonable attorneys' fees, costs of court; and all other relief the Court deems appropriate.

Respectfully submitted,

ROGERS, MORRIS & GROVER, L.L.P.



SARAH WEBER LANGLOIS

Federal I.D. No. 771660

State Bar No. 24056503

PAUL A. LAMP

Federal I.D. No. 21711

State Bar No. 24002443

5718 Westheimer, Suite 1200

Houston, Texas 77057

Telephone: 713/960-6000

Facsimile: 713/960-6025

Of Counsel:

ROGERS, MORRIS & GROVER, L.L.P.

JEFFREY L. ROGERS

Federal I.D. No. 4522

State Bar No. 17174500

RICHARD A. MORRIS

Federal I.D. No. 15004

State Bar No. 14497750

5718 Westheimer, Suite 1200

Houston, Texas 77057

Telephone: 713/960-6000

Facsimile: 713/960-6025

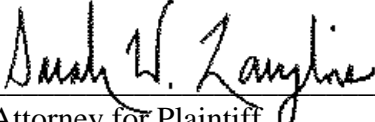
ATTORNEYS FOR PLAINTIFF

HARRIS COUNTY DEPARTMENT OF EDUCATION

CERTIFICATE OF SERVICE

I hereby certify that on the 27th day of July, 2012, I electronically filed the foregoing document with the Clerk of Court using the CM/ECF system which will send notification of such filing to the following:

Fred A. Keys, Jr.
1019 Congress, 15th Floor
Houston, Texas 77002
(Email: fred.keys@cao.hctx.net)
Counsel for Defendant Harris County, Texas



Attorney for Plaintiff

EXHIBIT A

**IN THE UNITED STATES DISTRICT COURT
FOR THE SOUTHERN DISTRICT OF TEXAS
HOUSTON DIVISION**

JAMES RODRIGUEZ, *et al.*,

Plaintiffs,

v.

HARRIS COUNTY, TEXAS, *et al.*,

Defendants.

§
§
§
§
§
§
§
§

Civil Action No. 4:11-2907

ORDER

Plaintiffs herein have filed suit against Harris County and Ed Emmett alleging violations of the Equal Protection Clause, Section 2 of the Voting Rights Act, and Section 5 of the Voting Rights Act in relation to Harris County's proposed redistricting plan for the Harris County Commissioner's Court. Harris County is a covered jurisdiction under the Voting Rights Act and must receive preclearance from the Department of Justice or the U.S. District Court for the District of Columbia before implementing a voting change. To date, Harris County has not received preclearance from the Department of Justice to use their proposed redistricting plan. At a hearing on Monday, November 7, 2011, the Defendants advised the Court of their intent to conduct the 2012 election under the existing plan (the "2001 Plan"). The Plaintiffs contend that the use of the existing plan to conduct the 2012 election is unconstitutional and violates Section 2 of the Voting Rights.

On November 14 -15, 2011, the Court held a hearing to examine the propriety of using the existing commissioner precinct boundaries to facilitate the 2012 election. At that hearing, the Court

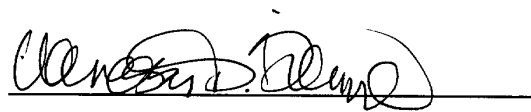
found that the use of the existing commissioner precinct boundaries for the 2012 election was unconstitutional because the boundaries would result in a total population deviation of more than 25%, well outside of constitutionally permissible limits. Both parties offered evidence on a proposed interim plan. The Defendants offered no testimony on the existence of any exigent circumstances which would permit the Court to adopt or allow the use of a constitutionally infirm plan.

The Court has considered the evidence presented by the parties, including their proposed interim plans, and has considered all of the principles governing court-devised interim plans. *See Abrams v. Johnson*, 521 U.S. 74, 98 (1997); *McDaniel v. Sanchez*, 452 U.S. 130, 149 (1981); *Connor v. Finch*, 431 U.S. 407, 414 (1977); *Upham v. Seamon*, 456 U.S. 37, 41-44 (1982). The Court has determined that the attached plan meets the legal requirements for a court-devised interim plan.

Accordingly, the Court **ORDERS** the Defendant to adopt and implement the Court's interim plan to facilitate the 2012 election of the Harris County Commissioner's Court.

The Clerk shall enter this Order and provide a copy to all parties.

SIGNED on this the 19th day of November, 2011, at Houston, Texas.



**VANESSA D. GILMORE
UNITED STATES DISTRICT JUDGE**

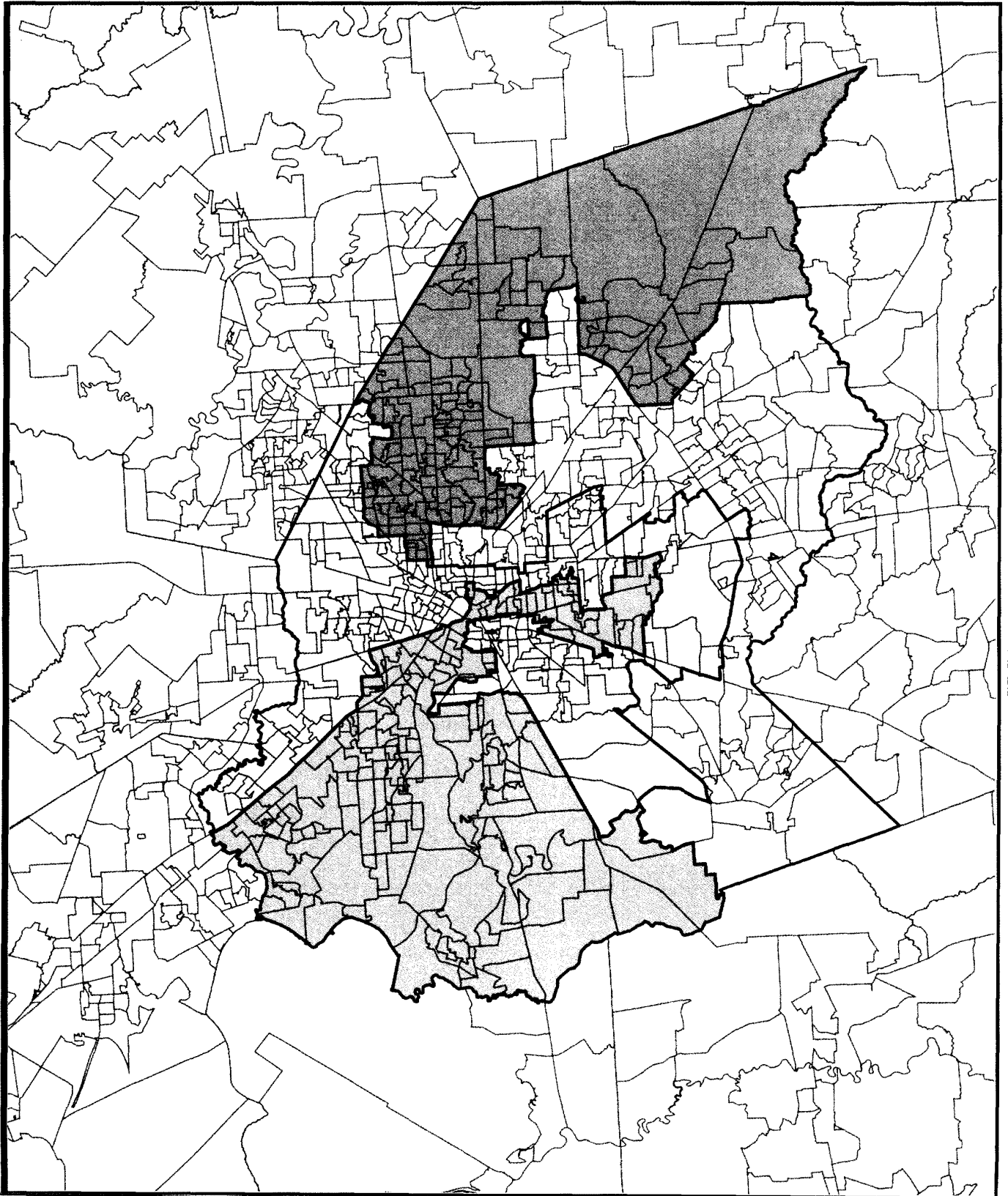


EXHIBIT B

IN THE UNITED STATES DISTRICT COURT
FOR THE SOUTHERN DISTRICT OF TEXAS
HOUSTON DIVISION

JAMES RODRIGUEZ; EDWARD §
GONZALEZ; ORNALDO YBARRA; §
PATRICIA GONZALES; THOMAS §
BERG; REYNALDO GUERRA; and §
SANDRA PUENTE §

Plaintiffs

v.

HARRIS COUNTY, TEXAS, and §
ED EMMETT, in his capacity §
as Harris County Judge §

Defendants.


§ CIVIL ACTION NO. 4:11-CV-02907
§
§
§
§
§
§

ORDER

Before the Court is Defendants' Unopposed Motion for Revision of Interim Map to Remedy Movement of Two Key Service Facilities. Having considered the motion, the accompanying exhibits, and all applicable law, the Court determines that the motion should be and hereby is should be GRANTED.

It is therefore ORDERED that the interim plan attached as page three to the Court's Order of November 19, 2011 (Dkt. # 66) is withdrawn, and the interim plan attached to this Order, which the Court has determined meets the legal requirements of a court-devised interim plan, is substituted in its place. All other terms of the Court's November 19, 2011, Order (Dkt. # 66) remain unchanged.

Signed November 23, 2011

1 
United States District Judge

HOU:3170452.1

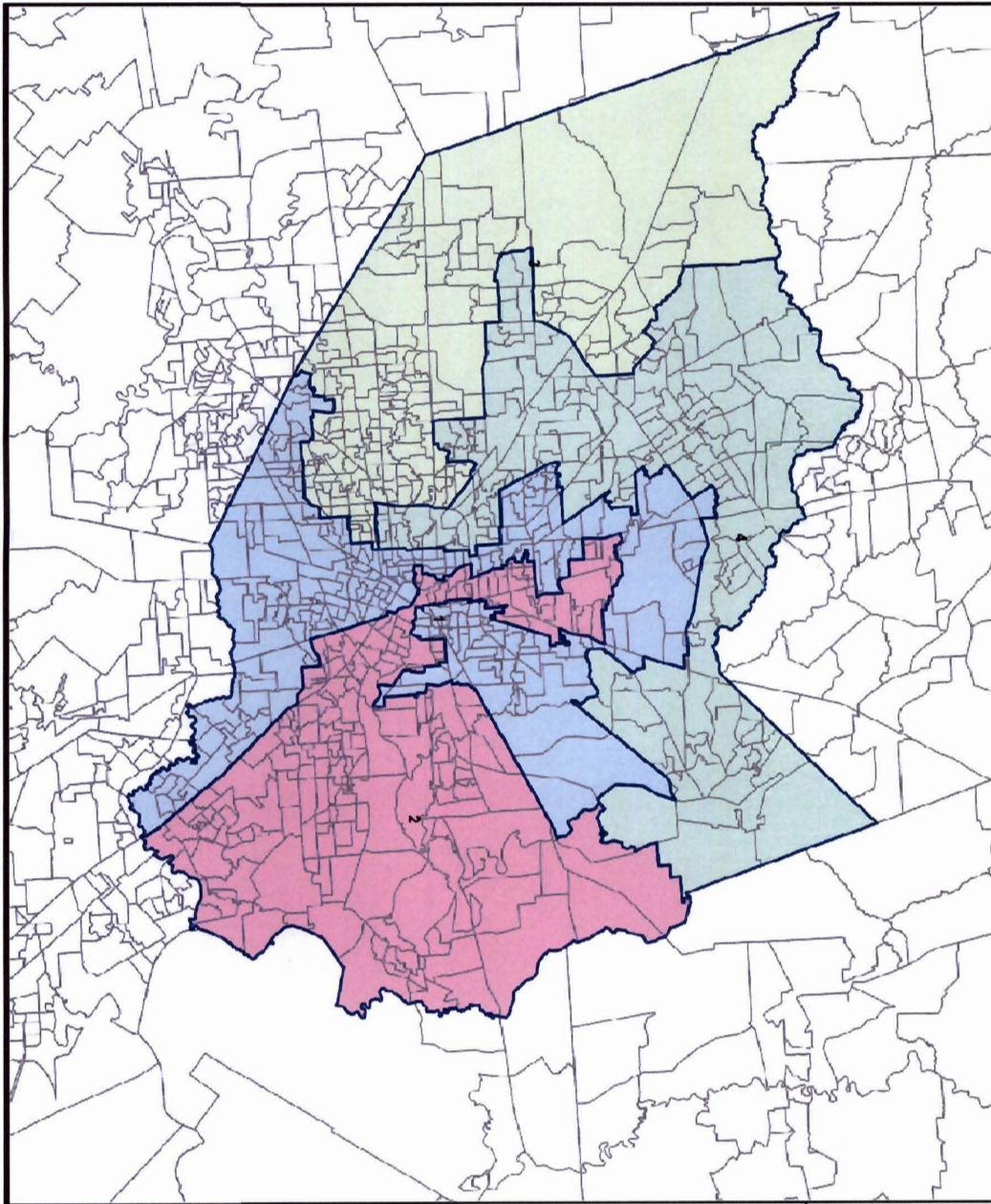
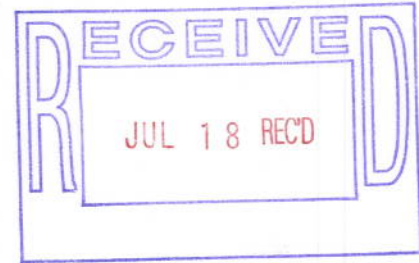


EXHIBIT C



DON SUMNERS, CPA, RTA
HARRIS COUNTY TAX ASSESSOR - COLLECTOR
WWW.HCTAX.NET



July 13, 2012

Ms. Angie Chestnut, Board President
Harris County Department of Education
6300 Irvington Blvd
Houston, TX 77022

Re: May 29, 2012 Primary Elections
County School Trustee Positions Four and Six

Dear Ms. Chestnut:

It has just come to our attention that the trustee district lines for the Harris County Department of Education (HCDE) were not updated for the 2012 Primary Election. Normally, changes to the approximately 500 entities with over 700 district lines are provided to the Voter Registrar (Tax Office) by the affected entity as required by Sec. 42.0615 of the Texas Election Code. The HCDE failed to advise the Tax Office of the required changes. However, the Tax Office should have recognized that the HCDE request for changes in their district lines, which correspond to the County Commissioner precinct lines, had not been received.

Only two HCDE District races were impacted by the district lines not being updated - Democratic Party County School Trustee, Position Six and Republican Party County School Trustee, Position Four. The Democratic Party County School Trustee, Position Four and the Republican Party County School Trustee, Position Six races were not impacted as there was only one candidate in each of these races.

In the Republican Primary Position Four race, the number of voters impacted was less than 1500 which is well below the approximate 21,000 vote difference between the candidates. There was a winner in the race so there is no Primary Run-Off Election.

In the Democratic Primary Position Six race, the number of voters who were not given the opportunity to vote in the race was 1396. The number of those who voted in the race but did not reside in the district was 872. Unfortunately, there is no way to positively know the impact on the Position Six race of the failure to update (redistrict) the boundary lines. Details of the voting information and impact calculations can be found on the attached exhibit.

Page 2

The Tax Office has completed correcting the Primary Run-off Election district boundary lines and provided the updated data to the County Clerk. The correct boundary lines will be used for the Democratic Primary Run-off Election.

I apologize for this oversight on the part of the Tax Office. Should you have any questions, please do not hesitate to call me at 713-274-8002.

Sincerely,



Don Summers
Harris County Tax Assessor-Collector and Voter Registrar

Attachment

cc: Ms. Erica S. Lee
Mr. Jarvis D. Johnson
Harris County Democratic Party
Harris County Republican Party
Harris County Commissioners Court
Harris County Clerk
Harris County Attorney



Harris County Department of Education

Impact on Voting of the Failure to Update (Redistrict) Trustee District Position Six for New County Precinct One Boundary Lines for the May 29, 2012 Primary Election

Scenarios	Jarvis Johnson		Other Candidates		Total	
	No. Votes	Percent	No. Votes	Percent	No. Votes	Percent
Recorded Election Results	16,557	49.48%	*16,902	*50.52%	33,459	100.00%
If Updated (Redistricted)						
Most Favorable to Johnson:						
Votes added **	1,396				1,396	
Votes lost***	-432		-440		-872	
Revised results	17,521	51.56%	16,462	48.44%	33,983	100.00%
Necessary for Johnson to Win:						
Votes added	****867		529		1,396	
Votes lost	-432		-440		-872	
Revised results	16,992	50.01%	16,991	49.99%	33,983	100.00%

*Votes cast were Erica Lee--13,569 votes, 40.55%; Reagan Flowers--3,333 votes, 9.96%

**Includes all 273 votes cast by voters in the Position 4 district race in County Precinct 3, which should have been cast in the Position 6 district race in County Precinct 1 and all 1,123 votes cast by voters in the at large race in County Precinct 1, who did not have the Position 6 district race on their ballot

*** Actual votes cast for candidates in the Position 6 district race by voters not residing in the district

**** Johnson would have to get 867 votes or 62.11% of the votes added to get over 50% of the total votes cast

Note: Voting data provided by the Harris County Clerk

Prepared by HCTO July 12, 2012



DON SUMNERS, CPA, RTA
Harris County Tax Assessor - Collector

P.O. Box 3547
Houston, Texas 77253-3547

RETURN SERVICE REQUESTED

RETURN SERVICE
REQUESTED

PRESORTED
FIRST CLASS



02 1R
0002002773 JUL 16 2012
MAILED FROM ZIP CODE 77054
\$ 00.35⁰

Ms. Angie Chestnut, Board President
Harris County Department of Education
6300 Irvington Blvd
Houston, TX 77022

HCTO 250

EYXWS5B 77022



EXHIBIT D

Cumulative Report — Official Harris County, Texas — Democratic Party Primary Election — May 29, 2012

Page 20 of 27

06/05/2012 04:32 PM

Total Number of Voters : 240,466 of 1,901,722 = 12.64%

Precincts Reporting 1,064 of 1,064 = 100.00%

Party	Candidate	Absentee		Early		Election		Total	
Dem - County Attorney, Vote For 1	DEM								
	Vince Ryan	6,760	100.00%	21,085	100.00%	26,827	100.00%	54,672	100.00%
	Cast Votes:	6,760	77.04%	21,085	69.97%	26,827	71.40%	54,672	71.48%
	Over Votes:	0	0.00%	0	0.00%	0	0.00%	0	0.00%
	Under Votes:	2,015	22.96%	9,051	30.03%	10,748	28.60%	21,814	28.52%

Dem - Sheriff, Vote For 1	DEM								
	Adrian Garcia	5,563	69.17%	18,137	68.61%	24,044	71.56%	47,744	70.13%
	Delores Jones	2,005	24.93%	6,881	26.03%	7,856	23.38%	16,742	24.59%
	Charles Massey El	475	5.91%	1,417	5.36%	1,699	5.06%	3,591	5.27%
	Cast Votes:	8,043	91.66%	26,435	87.72%	33,599	89.42%	68,077	89.01%
	Over Votes:	29	0.33%	0	0.00%	0	0.00%	29	0.04%
	Under Votes:	703	8.01%	3,701	12.28%	3,976	10.58%	8,380	10.96%

Dem - County Tax Assessor-Collector, Vote For 1	DEM								
	Ann Harris Bennett	7,085	100.00%	21,690	100.00%	27,389	100.00%	56,164	100.00%
	Cast Votes:	7,085	80.74%	21,690	71.97%	27,389	72.89%	56,164	73.43%
	Over Votes:	0	0.00%	0	0.00%	0	0.00%	0	0.00%
	Under Votes:	1,690	19.26%	8,446	28.03%	10,186	27.11%	20,322	26.57%

Dem - County School Trustee, Position 3, At Large, Vote For 1	DEM								
	David Rosen	2,743	38.07%	9,547	41.41%	12,002	41.40%	24,292	41.00%
	Diane Trautman	4,462	61.93%	13,506	58.59%	16,989	58.60%	34,957	59.00%
	Cast Votes:	7,205	82.11%	23,053	76.50%	28,991	77.16%	59,249	77.46%
	Over Votes:	24	0.27%	0	0.00%	0	0.00%	24	0.03%
	Under Votes:	1,546	17.62%	7,083	23.50%	8,584	22.84%	17,213	22.50%

Dem - County School Trustee, Position 4, Precinct 3, Vote For 1	DEM								
	Silvia Mintz	578	100.00%	3,686	100.00%	4,528	100.00%	8,792	100.00%
	Cast Votes:	578	71.80%	3,686	73.15%	4,528	73.84%	8,792	73.41%
	Over Votes:	0	0.00%	0	0.00%	0	0.00%	0	0.00%
	Under Votes:	227	28.20%	1,353	26.85%	1,604	26.16%	3,184	26.59%

Precincts			Voters		
Counted	Total	Percent	Ballots	Registered	Percent
237	237	100.00%	11,976	524,138	2.28%

Cumulative Report — Official Harris County, Texas — Democratic Party Primary Election — May 29, 2012

Page 21 of 27

06/05/2012 04:32 PM

Total Number of Voters : 240,466 of 1,901,722 = 12.64%

Precincts Reporting 1,064 of 1,064 = 100.00%

Party	Candidate	Absentee		Early		Election		Total	
-------	-----------	----------	--	-------	--	----------	--	-------	--

Dem - County School Trustee, Position 6, Precinct 1, Vote For 1 DEM

Jarvis Johnson		2,679	58.83%	6,311	49.37%	7,567	46.94%	16,557	49.48%
Reagan Flowers		352	7.73%	1,108	8.67%	1,873	11.62%	3,333	9.96%
Erica S. Lee		1,523	33.44%	5,364	41.96%	6,682	41.45%	13,569	40.55%
Cast Votes:		4,554	91.13%	12,783	86.08%	16,122	85.34%	33,459	86.37%
Over Votes:		13	0.26%	0	0.00%	0	0.00%	13	0.03%
Under Votes:		430	8.61%	2,068	13.92%	2,770	14.66%	5,268	13.60%

Precincts			Voters		
Counted	Total	Percent	Ballots	Registered	Percent
317	317	100.00%	38,740	462,549	8.38%

Dem - County Commissioner, Precinct 1, Vote For 1 DEM

El Franco Lee		4,345	100.00%	12,282	100.00%	15,566	100.00%	32,193	100.00%
Cast Votes:		4,345	90.48%	12,282	81.34%	15,566	80.55%	32,193	82.07%
Over Votes:		0	0.00%	0	0.00%	0	0.00%	0	0.00%
Under Votes:		457	9.52%	2,817	18.66%	3,758	19.45%	7,032	17.93%

Precincts			Voters		
Counted	Total	Percent	Ballots	Registered	Percent
313	313	100.00%	39,225	489,901	8.01%

Dem - County Commissioner, Precinct 3, Vote For 1 DEM

A. Robert Hassan		210	36.65%	1,587	45.03%	1,826	42.93%	3,623	43.39%
Glorice McPherson		363	63.35%	1,937	54.97%	2,427	57.07%	4,727	56.61%
Cast Votes:		573	73.84%	3,524	75.01%	4,253	74.48%	8,350	74.66%
Over Votes:		1	0.13%	0	0.00%	0	0.00%	1	0.01%
Under Votes:		202	26.03%	1,174	24.99%	1,457	25.52%	2,833	25.33%

Precincts			Voters		
Counted	Total	Percent	Ballots	Registered	Percent
226	226	100.00%	11,184	489,984	2.28%

Cumulative Report — Official Harris County, Texas — Republican Party Primary Election — May 29, 2012

Page 23 of 29

06/05/2012 04:32 PM

Total Number of Voters : 240,466 of 1,901,722 = 12.64%

Precincts Reporting 1,064 of 1,064 = 100.00%

Party	Candidate	Absentee		Early		Election		Total	
Rep - Sheriff, Vote For 1 REP									
	Brian Steinocher	403	2.42%	1,827	3.58%	3,319	5.13%	5,549	4.19%
	Ruben Monzon	2,908	17.43%	6,785	13.30%	6,905	10.67%	16,598	12.53%
	Paul Day	857	5.14%	2,889	5.66%	5,092	7.87%	8,838	6.67%
	Daniel J. Lemkuil	194	1.16%	717	1.40%	1,054	1.63%	1,965	1.48%
	Harold Heuszel	3,402	20.39%	10,761	21.09%	9,308	14.38%	23,471	17.72%
	Louis Guthrie	6,544	39.23%	15,221	29.83%	19,012	29.38%	40,777	30.79%
	Guy Clark	407	2.44%	2,158	4.23%	4,358	6.73%	6,923	5.23%
	Carl Pittman	1,966	11.79%	10,675	20.92%	15,669	24.21%	28,310	21.38%
	Cast Votes:	16,681	87.04%	51,033	84.57%	64,717	76.61%	132,431	80.76%
	Over Votes:	35	0.18%	0	0.00%	0	0.00%	35	0.02%
	Under Votes:	2,448	12.77%	9,310	15.43%	19,756	23.39%	31,514	19.22%

Rep - County Tax Assessor-Collector, Vote For 1 REP									
	Mike Sullivan	12,556	72.17%	33,797	64.20%	41,405	60.68%	87,758	63.46%
	Don Summers	4,842	27.83%	18,845	35.80%	26,835	39.32%	50,522	36.54%
	Cast Votes:	17,398	90.78%	52,642	87.24%	68,240	80.78%	138,280	84.33%
	Over Votes:	20	0.10%	0	0.00%	0	0.00%	20	0.01%
	Under Votes:	1,746	9.11%	7,701	12.76%	16,233	19.22%	25,680	15.66%

Rep - County School Trustee, Position 3, At Large, Vote For 1 REP									
	Richard Johnson	2,891	17.99%	15,660	34.24%	24,780	43.79%	43,331	36.60%
	Mike Wolfe	13,179	82.01%	30,076	65.76%	31,807	56.21%	75,062	63.40%
	Cast Votes:	16,070	83.86%	45,736	75.79%	56,587	66.99%	118,393	72.20%
	Over Votes:	24	0.13%	0	0.00%	0	0.00%	24	0.01%
	Under Votes:	3,070	16.02%	14,607	24.21%	27,886	33.01%	45,563	27.79%

Rep - County School Trustee, Position 4, Precinct 3, Vote For 1 REP									
	Raymond T. Garcia	705	11.60%	3,737	23.46%	5,857	29.21%	10,299	24.49%
	Kay Smith	5,370	88.40%	12,189	76.54%	14,194	70.79%	31,753	75.51%
	Cast Votes:	6,075	83.70%	15,926	75.85%	20,051	65.66%	42,052	71.53%
	Over Votes:	58	0.80%	0	0.00%	0	0.00%	58	0.10%
	Under Votes:	1,125	15.50%	5,071	24.15%	10,486	34.34%	16,682	28.37%

Precincts			Voters		
Counted	Total	Percent	Ballots	Registered	Percent
237	237	100.00%	58,792	524,138	11.22%

Cumulative Report — Official Harris County, Texas — Republican Party Primary Election — May 29, 2012

Page 24 of 29

06/05/2012 04:32 PM

Total Number of Voters : 240,466 of 1,901,722 = 12.64%

Precincts Reporting 1,064 of 1,064 = 100.00%

Party	Candidate	Absentee	Early	Election	Total
-------	-----------	----------	-------	----------	-------

Rep - County School Trustee, Position 6, Precinct 1, Vote For 1 REP

JuLurette Bartlett-Pack

	1,404 100.00%	3,368 100.00%	5,025 100.00%	9,797 100.00%
--	---------------	---------------	---------------	---------------

Cast Votes:	1,404 71.96%	3,368 62.77%	5,025 55.97%	9,797 60.12%
Over Votes:	0 0.00%	0 0.00%	0 0.00%	0 0.00%
Under Votes:	547 28.04%	1,998 37.23%	3,953 44.03%	6,498 39.88%

Precincts			Voters		
Counted	Total	Percent	Ballots	Registered	Percent
317	317	100.00%	16,295	462,549	3.52%

Rep - County Commissioner, Precinct 1, Vote For 1 REP

Chuck Maricle

	1,471 100.00%	3,653 100.00%	5,301 100.00%	10,425 100.00%
--	---------------	---------------	---------------	----------------

Cast Votes:	1,471 73.70%	3,653 63.92%	5,301 56.76%	10,425 61.14%
Over Votes:	0 0.00%	0 0.00%	0 0.00%	0 0.00%
Under Votes:	525 26.30%	2,062 36.08%	4,038 43.24%	6,625 38.86%

Precincts			Voters		
Counted	Total	Percent	Ballots	Registered	Percent
313	313	100.00%	17,050	489,901	3.48%

Rep - County Commissioner, Precinct 3, Vote For 1 REP

Steve Radack

	5,758 100.00%	15,086 100.00%	20,506 100.00%	41,350 100.00%
--	---------------	----------------	----------------	----------------

Cast Votes:	5,758 80.64%	15,086 74.13%	20,506 68.60%	41,350 72.06%
Over Votes:	0 0.00%	0 0.00%	0 0.00%	0 0.00%
Under Votes:	1,382 19.36%	5,265 25.87%	9,388 31.40%	16,035 27.94%

Precincts			Voters		
Counted	Total	Percent	Ballots	Registered	Percent
226	226	100.00%	57,385	489,984	11.71%